

STOP EMERALD ASH BORER FROM INVADING OHIO



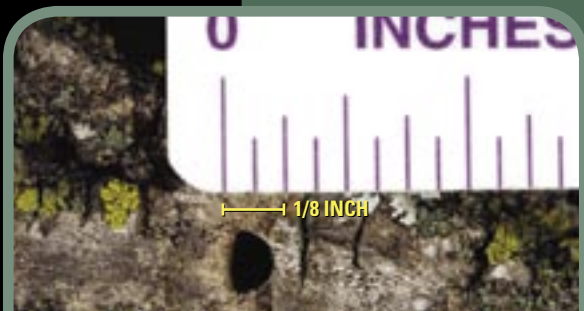
ADULT EMERALD ASH BORER
Look for June to August



S-SHAPED GALLERIES
Look for under bark year-round



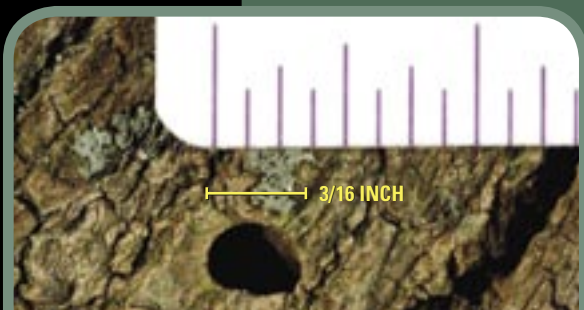
ADULT EMERALD ASH BORER ON ASH LEAF
Ash is one of the most common trees in Ohio



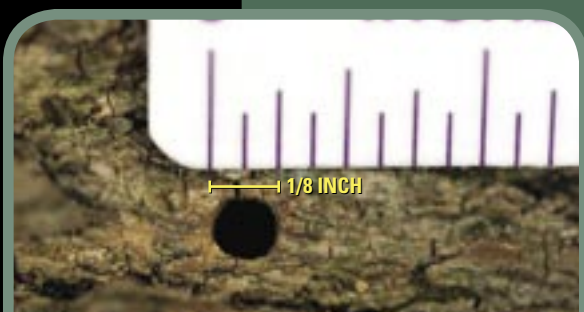
EMERALD ASH BORER D-SHAPED EXIT HOLE
Look for year-round



EMERALD ASH BORER LARVA
Look for July to October



REDHEADED ASH BORER EXIT HOLE
Native borers are often confused with Emerald Ash Borer



CLEARWING BORER EXIT HOLE
Native borers are often confused with Emerald Ash Borer

If you think you have Emerald Ash Borer,
call the Ohio Department of Agriculture Hotline:

1-888-OHIOEAB

For more information, see
www.ashalert.osu.edu

SPONSORED BY:

- Ohio State University Extension
- Ohio Agricultural Research and Development Center
- Ohio Department of Natural Resources
- Ohio Department of Agriculture
- USDA Forest Service
- Renewable Resource Extension Act



UNUSUAL SPROUTING FROM BOTTOM OF TREE
Look for year-round

